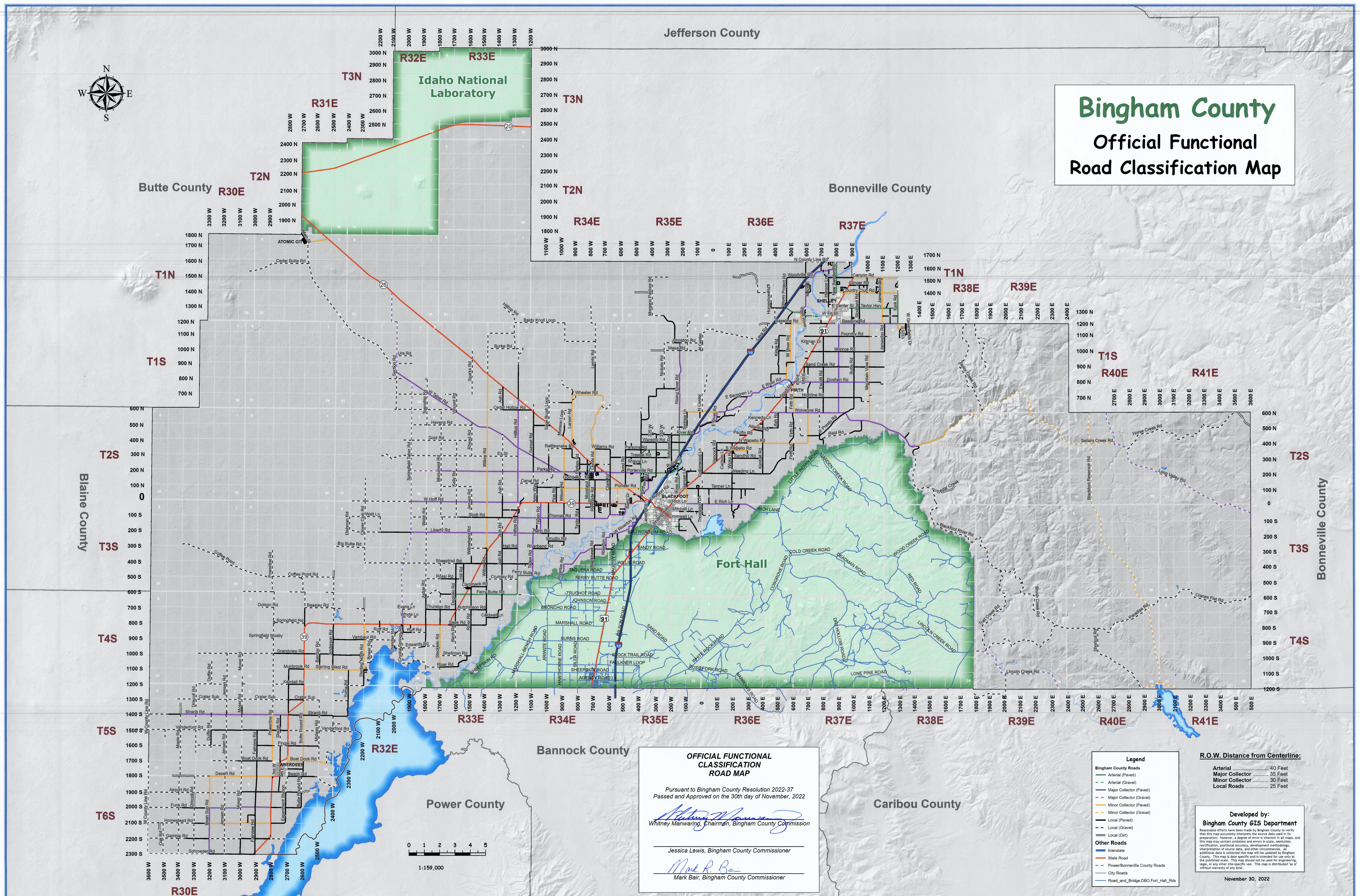


# Bingham County Official Functional Road Classification Map



**OFFICIAL FUNCTIONAL CLASSIFICATION ROAD MAP**

Pursuant to Bingham County Resolution 2022-37  
Passed and Approved on the 30th day of November, 2022

*Whitney Manwaring*  
Whitney Manwaring, Chairman, Bingham County Commission

Jessica Lewis, Bingham County Commissioner  
Mark Bair, Bingham County Commissioner

**Legend**

Bingham County Roads	
Arterial (Paved)	Green line
Arterial (Gravel)	Light green line
Major Collector (Paved)	Blue line
Major Collector (Gravel)	Light blue line
Minor Collector (Paved)	Orange line
Minor Collector (Gravel)	Light orange line
Local (Paved)	Black line
Local (Gravel)	Light grey line
Local (Dirt)	Thin black line
<b>Other Roads</b>	
Interstate	Thick blue line
State Road	Red line
Power/Bonneville County Roads	Dashed black line
City Roads	Thin grey line
Roads and Bridge DBO Fort Hall Rds	Thin blue line

**R.O.W. Distance from Centerline:**

Arterial	40 Feet
Major Collector	35 Feet
Minor Collector	30 Feet
Local Roads	25 Feet

**Developed by:**  
Bingham County GIS Department

Reasonable efforts have been made by Bingham County to verify that this map accurately interprets the source data used in its preparation. However, a degree of error is inherent in all maps and this map may contain omissions and errors in scale, resolution, rectification, positional accuracy, development methodology, interpretation of source data, and other circumstances. An additional data is collected from maps will be updated by Bingham County. This map is date specific and is intended for use only at the published scale. This map should not be used for engineering, legal, or any other site-specific use. This map is distributed as it without warranty of any kind.

November 30, 2022

